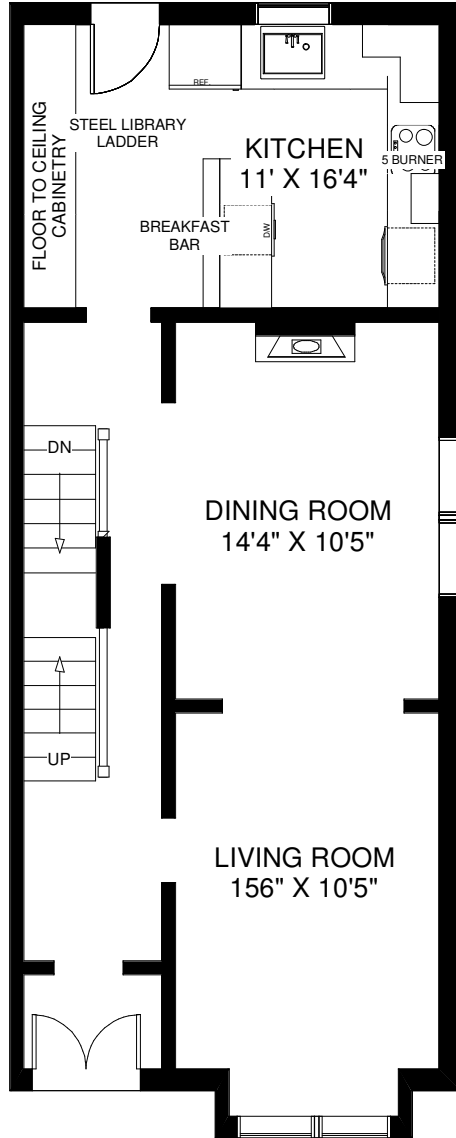


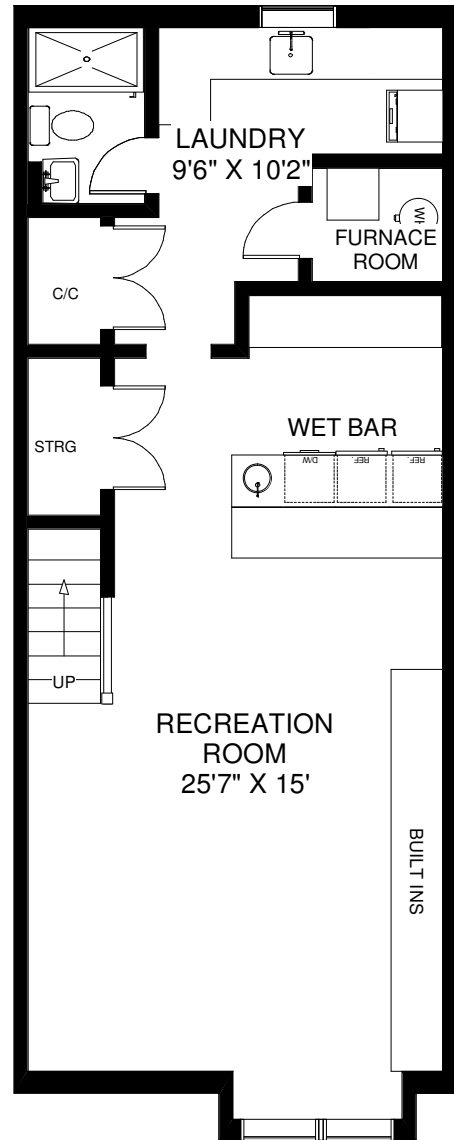
50 STEWART STREET

WALK OUT TO DECK
14' X 20'
PLUS SWIMMING POOL



CEILING HT 10'9"

MAIN FLOOR
APPROXIMATELY 740 SQ FT

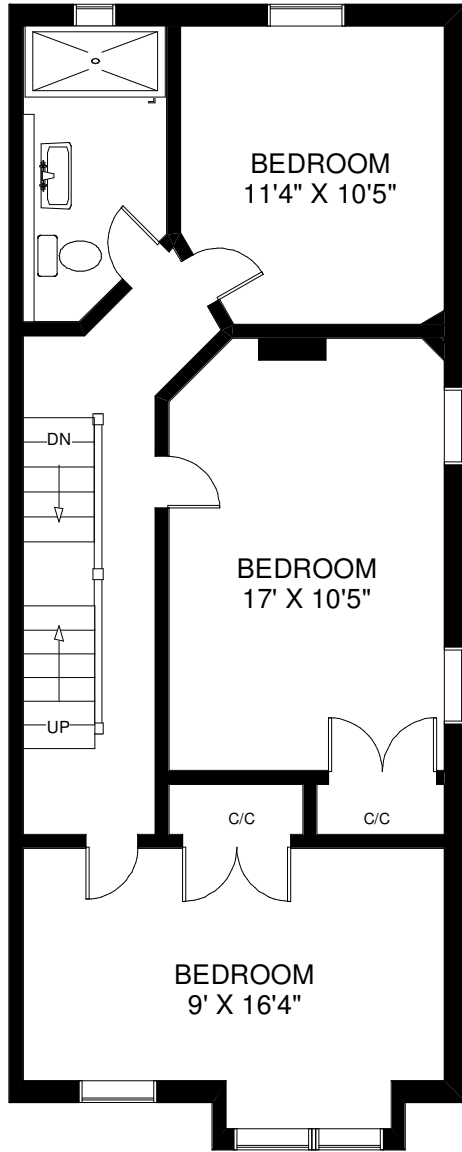


CEILING HT 7'2"

LOWER FLOOR
APPROXIMATELY 740 SQ FT

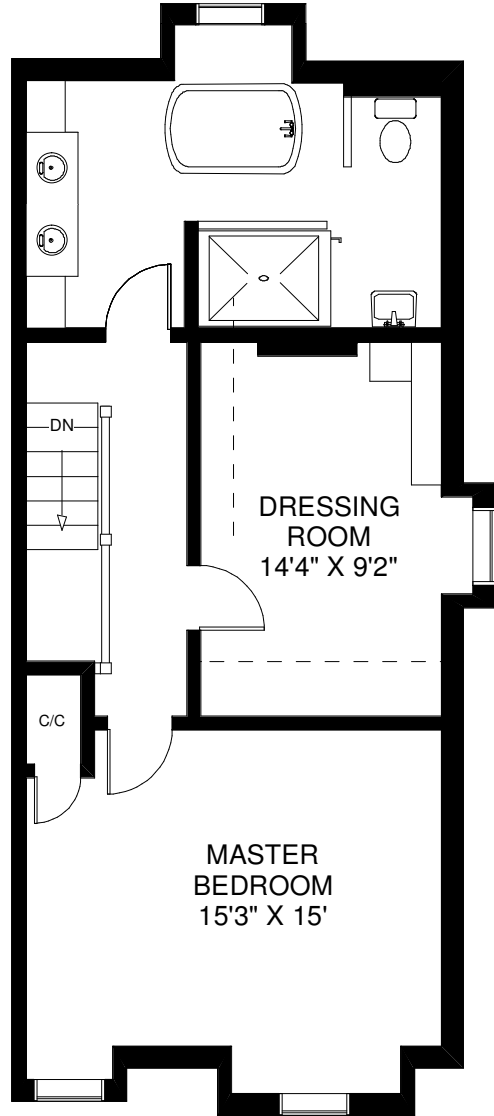
Note: Measurements & Calculations are approximate.
Provided as a guideline only.

50 STEWART STREET



CEILING HT 9'2"

SECOND FLOOR
APPROXIMATELY 740 SQ FT



CEILING HT 9'

THIRD FLOOR
APPROXIMATELY 710 SQ FT

Note: Measurements & Calculations are approximate.
Provided as a guideline only.